

RJF EZ



USB-A Field



MTRJ Field



RJ Field



USB-B Field



LC Field



RJF 544



FW Field (IEEE 1394)



RJF TV



Self Closing Cap
(RJ 45/USB/IEEE 1394)



Amphenol

FIELD Series

Reinforced Infocom Connectors for Harsh Environment
RJF Field - USB Field - FireWire Field - LC Field - MTRJ field



Electronica 2004

Amphenol
RJF Series
Awarded

*"Component
product of the
year"*

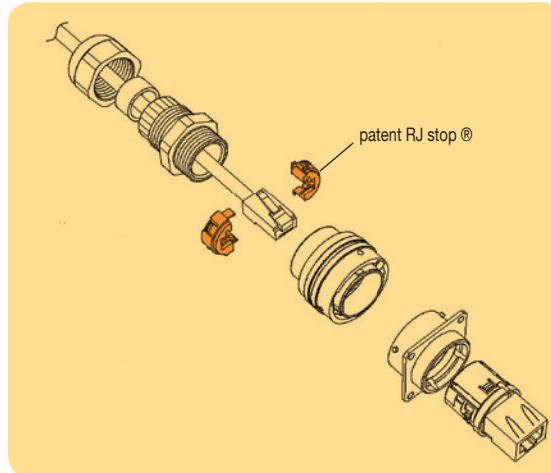
FIELD SERIES

RJFIELD CONCEPT

The Amphenol Field Series allows you to transform a standard infocom cordset into a rugged waterproof connector for harsh environments.

Example for RJ 45 cordset

www.rjfield.com



RJ field allows you to use Ethernet Class D / Cat. 5e connections for 10 Base T, 100 Base TX or 1000 Base T networks in extreme environments.

No Tool

No Cabling

RJ FIELD SELECTION GUIDE

		Coupling Mechanism	Shape	Material	Specification	Prime Market
	RJF EZ	Lever	Rectangular	Plastic	N/A	Industrial & Telecom
	RJF 544	Push Pull	Circular	Plastic	N/A	Industrial & Telecom
	RJF	Bayonet	Circular	Metal	MIL-C-26482	MIL / Aero & Industrial
	RJF TV	Thread	Circular	Metal	MIL-DTL-38999 (Series III)	MIL / Aero & Rail Mass Transit

APPLICATIONS

Commercial Avionics and Rail Mass Transit



Factory Automation



Video and CCTV



Wireless Systems

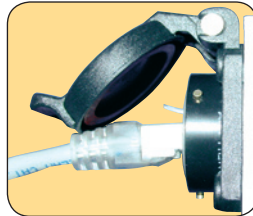


C4ISR Military Communications





SELF CLOSING CAP



www.rjfield.com

This Self Closing Cap automatically protects the Amphenol RJ Field square flange receptacles (MIL-C-26482 type), securing the system against dust and fluids.

The same snap cap is also available to protect USB or FireWire (IEEE 1394) receptacles.

An automatic spring closure located on the upper part of the connector snaps the cap closed when not in use. This system provides splash proof protection to either USB, FireWire or RJ Field receptacles.

USB FIELD AND FIREWIRE FIELD



USB-A Field



USB-B Field



www.usbfield.com

www.fwfield.com

Allows the use of a standard USB or FireWire (IEEE 1394) connection in harsh environments.

MTRJ FIELD AND LC FIELD



www.amphenol-fiberopticsolutions.com

Offers an easy solution to upgrade from a standard MTRJ or LC to an environmental connector.

RJ FIELD MAIN CHARACTERISTICS

- A full range of versions depending upon the application
- No cabling operation nor measurement required after installation
- Sealing: IP67 (1 meter immersion for up to one hour)
- Shock, vibration and traction resistant
- Inline extension
- Mechanical coding/polarization
- EMI protection



Electronica 2004

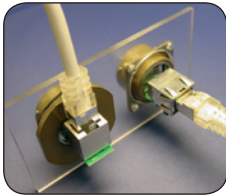
Amphenol
RJF Series
Awarded

*"Component
product of the
year"*



FIELD SERIES

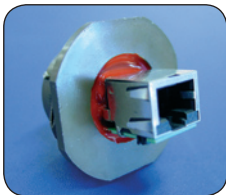
SPECIFIC PRODUCTS



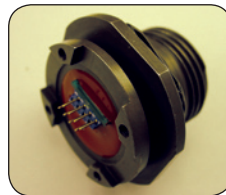
- RJF receptacles with 90° RJ45 Receptacles Back Termination
- For limited spatial requirements
 - 4 positions (up / down / right / left)



- RJF-RNJ: Blind Mate Connector For Rack and Panel Applications
- Sealed when mated
 - EMI protection



- RJF / RJFTV Receptacle with Transversal sealing
- Sealed connection without cap
 - Protects the electronic side of the equipment.



- Stand-Off Receptacle
- Receptacle can be soldered directly onto a PCB
- Panel Mount or Jam Nut styles available



- Fully Shielded Plug
- Improved EMI protection
 - 360° screening



- Fully Shielded Receptacle
- Improved EMI protection
 - 360° screening



- Industrial RJ Switch
- Industrial Ethernet Switch ruggedized and waterproof, 8 ports 10/100 Mbit/s
- Plastic and metallic enclosures for highly corrosive environment
 - Managed or unmanaged



- Military RJ Switch
- Military Ethernet Switch, ruggedized and waterproof, 8 ports 10/100 Mbit/s
- Aluminium enclosure suitable for shocks, vibration and EMI environments
 - Managed or unmanaged



- High Reliability Ethernet cable: Cat5 or Cat5e
- Embedded applications, military, railway, vehicles...
 - 4 twisted pairs - double shielding (Braid and Foil)
 - Halogen free flame retardant jacket
 - Reinforced jacket + kevlar pull wires



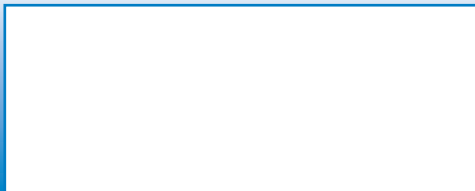
- Military Reel Equipped with our High Reliability Ethernet Cable
- Includes RJFTV Plug and Receptacle

Amphenol

The information given in this document are as a guideline only.
We reserve the right to modify our products in any way we deem necessary.
Any duplication is prohibited, unless approved in writing.
Realisation: wanagen:studios - Steven Kilgallon - 01/2005

DOC-000055-ANGIC

Your local Contact:



For more information, please visit our websites:
www.rjfield.com - www.usbfield.com - www.fwfield.com