

PanelView Plus 7 Standard



Graphic Terminals Designed to Improve Performance

Features and Benefits

Ideal for small and mid-size applications, the PanelView Plus 7 Standard offers:

- Single controller connection
- Up to 25 displays
- Up to 200 alarm messages

Increased Scalability

- Form factor includes sizes from 4" to 10" with wide screen options to meet a variety of application needs
- Complementary to CompactLogix 5370 controllers
- Using less than 2 inch cabinet depth saves space and reduces cost

Improved Performance

- Windows CE 6.0 standard features, including email and text notification and secure FTP server
- Ethernet communications for integration from the machine to the enterprise
- PDF Viewer

Mobile Enabled

- Monitor applications from a secure remote location with VNC connectivity
- Email and texting notification capabilities included

Enhanced Development Experience

- Faceplates and Add-on Instructions can save 50%-90% of complex screen development time
- Use an SD card to copy and restore the operator interface quickly
- Increase operator productivity by creating intuitive interface with gradient shading and PNG support



The PanelView™ Plus operator interface has been providing both a hardware and software platform for factory automation for years. It has continued to be an integral part of the Integrated Architecture® system – providing operators at the machine level a view into the control system. The PanelView Plus 7 Standard was developed as a continuation of the PanelView Plus family to continue to provide years of quality operator interfaces for industry.

In combination with FactoryTalk® View Machine Edition, this release continues the unmatched integration with Logix and complete scalability. This offering helps strengthen our Integrated Architecture offering for machine builders along with the CompactLogix™ L1, L2 and L3 controllers.

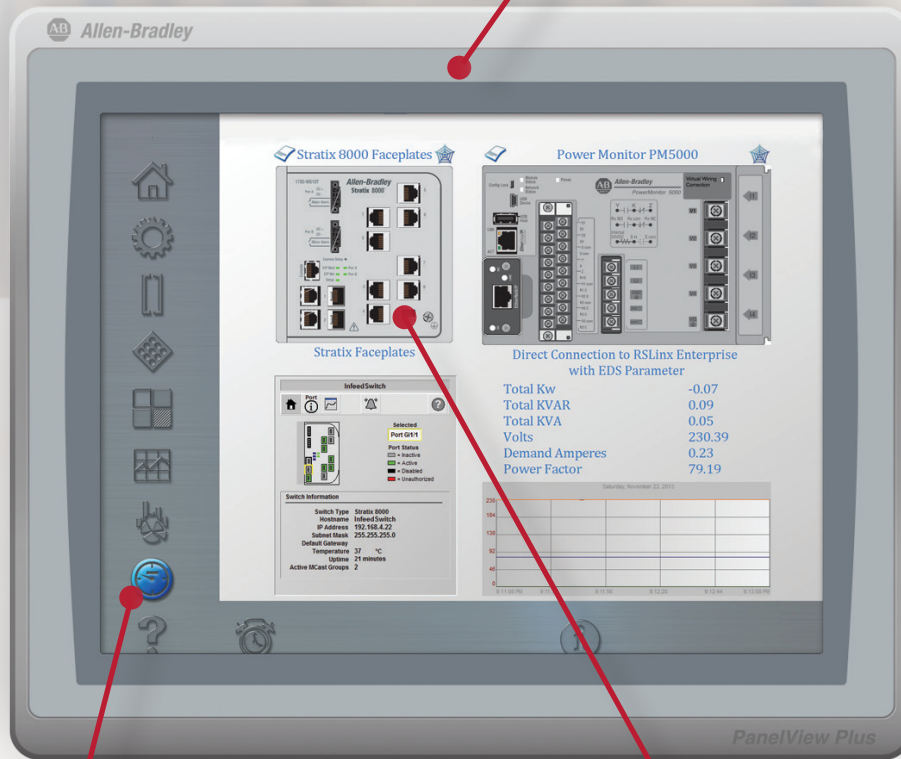
The new operator terminals are ideal for applications that require monitoring, controlling and displaying information in dynamic ways, where operators must quickly understand machine status and make better decisions.

The PanelView Plus 7 terminals are available in a variety of display sizes, including widescreen, enabling you to select exactly what is required for your application.

LISTEN.
THINK.
SOLVE.

PanelView Plus 7 Standard

ATEX Zone 2/22 and UL Class 1, Div 2 certification for use in hazardous environments



SD storage card slot for data storage, data logging, recipe management and terminal replication



USB ports for printer, RFID reader and web camera support, as well as a wide range of accessories

With the embedded PDF Viewer, show:

- User Manuals
- Installation Manuals
- SOPs (Standard Operating Procedures)

Faceplates and Add-on Instructions can save 50 – 90% of complex screen development time



Quick and Easy Terminal Copy and Restore

Use an SD card to quickly create copies of a terminal to reduce your time to market or restore a terminal.

- Operating system
- Network configuration and terminal settings
- FactoryTalk® View Machine Edition (ME) runtime file
- Datalogs and Recipe files



New installation clamps provide fast and simple terminal installation and removal



Embedded Ethernet port for connectivity from the machine to the enterprise



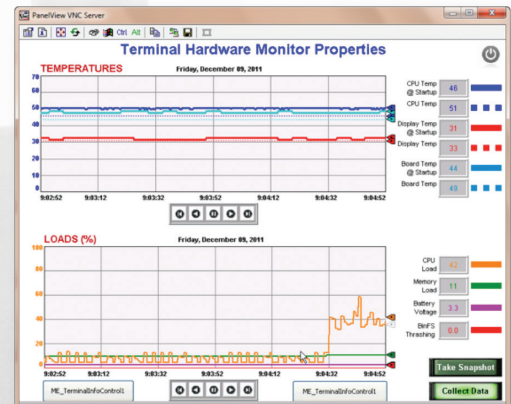
Additional screen options with widescreen 4" and 9" terminals

FactoryTalk View Machine Edition



Offers simplified project maintenance with improved handling of multiple FactoryTalk View Machine Editions applications on same terminal

- Added domain authentication options
- Manages security configuration within a running application
- Includes improved audit trail
- Provides recipe management, multi-language capabilities and intuitive animations



Fast Troubleshooting with Real Time Diagnostics

- Capture terminal environmental data at runtime such as temperature, load and battery voltage
- Mobile ready with VNC support and FactoryTalk Viewpoint

PanelView Plus 7 Standard Specifications

For up-to-date specifications, accessories, manuals and service information, visit www.ab.com/GraphicTerminals.

	PanelView Plus 7 Standard 400W	PanelView Plus 7 Standard 600	PanelView Plus 7 Standard 700	PanelView Plus 7 Standard 900W	PanelView Plus 7 Standard 1000
Display Size	160 x 67 mm 480 x 272 WQVGA	148 x 100 mm 640 x 480 VGA	153 x 118 mm 640 x 480 VGA	221 x 137 mm 800 x 480 WVGA	243 x 185 mm 800 x 600 SVGA
Display Type	Color TFT LCD				
Operating System	Microsoft Windows CE 6.0 R3				
Open Architecture	Yes				
CPU	ARM – 1.0 GHz				
RAM	512 MB				
Internal Storage	512 MB				
Real-time clock	Yes, Battery-backed time clock timestamps critical data. Accuracy +/-2 minutes per month				
Environmental Operating Temperature	0 – 55 °C (32 – 131 °F)				
Ratings	NEMA 12, 13, 4X, IP54, IP66				
Certifications	ATEX Zone 2; ATEX Zone 22; cULus listed; Class 1, Div 2, Groups A,B,C,D, T4; Class I, Zone 2, Groups 11C T4; KCC; CE(EMC); CE(LVD); RoHs				
SD	1 x SDHC				
USB	1 USB-A and 1 USB-B (v2.0 high speed)				
Ethernet	1 x RJ45 10/100 MB Auto-MDI/MDI-X with IEEE 1588 support				
Input Power	18-30V DC				
Standard Software	FactoryTalk Machine Edition 7.0 or later, FactoryTalk Viewpoint, PDF viewer, ActiveX controls, Remote terminal control, FTP server				

Allen-Bradley, CompactLogix, FactoryTalk, Integrated Architecture, LISTEN. THINK. SOLVE. PanelView and Rockwell Software are trademarks of Rockwell Automation, Inc. Trademarks not belonging to Rockwell Automation are property of their respective companies.

www.rockwellautomation.com

Power, Control and Information Solutions Headquarters

Americas: Rockwell Automation, 1201 South Second Street, Milwaukee, WI 53204-2496 USA, Tel: (1) 414.382.2000, Fax: (1) 414.382.4444

Europe/Middle East/Africa: Rockwell Automation NV, Pegasus Park, De Kleetlaan 12a, 1831 Diegem, Belgium, Tel: (32) 2 663 0600, Fax: (32) 2 663 0640

Asia Pacific: Rockwell Automation, Level 14, Core F, Cyberport 3, 100 Cyberport Road, Hong Kong, Tel: (852) 2887 4788, Fax: (852) 2508 1846